

AGENDA

ROSSMOOR COMMUNITY SERVICES DISTRICT

PUBLIC WORKS/CIP COMMITTEE MEETING

RUSH PARK
Administration Building
3001 Blume Drive
Rossmoor, California
Thursday, March 30, 2017
12:00 p.m.

A. ORGANIZATION

1. CALL TO ORDER: 12:00 p.m.
2. ROLL CALL: Directors Casey, Kahlert
3. PLEDGE OF ALLEGIANCE

B. PUBLIC FORUM

Any person may address the members of the Public Works/CIP Committee at this time upon any subject within the jurisdiction of the Public Works/CIP Committee of the Rossmoor Community Services District.

C. REGULAR CALENDAR


1. DISCUSSION WITH GENERAL MANAGER—Repair and replacement of the security lighting poles at Rossmoor Park.

D. ADJOURNMENT

CERTIFICATION OF POSTING

I hereby certify that the attached Agenda for the March 30, 2017 Public Works/CIP Committee Meeting of the Rossmoor Community Services District was posted at least 24 hours prior to the time of the meeting.

ATTEST:



James Ruth
General Manger

Date March 23, 2017

ROSSMOOR COMMUNITY SERVICES DISTRICT

AGENDA ITEM C-1

Date: March 22, 2017
To: C.I.P. Committee
From: General Manager
Subject: Security Lighting Pole Replacement—Rossmoor Park

BACKGROUND:

During the recent winter rainstorm one of our 30' security light poles at Rossmoor Park was severely damaged. Upon staff investigation it was determined that the pole was actually bent in half from the heavy winds during the rainstorm and the base of the pole experienced major rust erosion at its base causing metal fatigue.

Staff obtained the bids to replace the pole and light fixture that was damaged from the wind:

Bid #1	Express Energy Services Inc.	\$3,165
Bid #2	West Coast Electric	\$4,450

Staff recommends express energy bid of \$3,165 of which \$2,165 will be offset by our comprehensive insurance coverage. District will pay \$1,000 deductible.

Further investigation of the remaining 5 poles found that they also were experiencing rust and corrosion at the base and constitute a potential safety hazard. Bids were then solicited for replacement of the 5 remaining poles:

Bid #1	<u>Express Energy Services, Inc.</u> <i>Their proposal was for 5 poles, 30' high, 5" thickness (1" thicker Than our current poles).</i>	\$13,123
Bid #2	<u>West Coast Electric</u> <i>Their proposal for 5, 25' poles With 4"x4" thickness.</i>	\$14,500

The total cost of replacing the six poles (including the insurance coverage) is as follows:

Bid #1	Express Energy Services, Inc.	\$14,123
Bid # 2	West Coast Electric	\$15,500

The current security lighting pole system, which is approximately 30 years old, is a 30' light pole the same height as the proposed Express Energy Bid. Both bids include LED lighting, prevailing wages. Staff recommends the bid from Express Energy Services, Inc.

Currently, the funds remaining in the CIP Fund 40 are \$28,321. If we chose Bid #1, \$14,198 would remain at the end of this FY. This amount would then be the beginning fund balance for the FY 2017-2018 in Fund 40. Funds needed the following fiscal year can be discussed at the next CIP meeting covering the Estimates to Close and the Preliminary Budget.

ATTACHMENTS:

1. Bid #1 from Express Energy Services, Inc.
2. Bid #2 from West Coast Electric
3. Pictures of damaged poles

Rossmoor Park Pole Rust Replacement

March 8, 2017

By



Doc Rivers

10610 Humbolt Street
Los Alamitos, CA 90720
Office: 714-650-8870
Cell: 805-501-3508
E-Fax: 714.650.8910
C10 Electrical License # 719566

Areas of Concern

Volleyball

2 poles 30ft with 2 heads each on a bullhorn

Basketball

4 poles 30ft with 1 heads each on a tenon arm

Information on Lighting Standards Pole Foundation

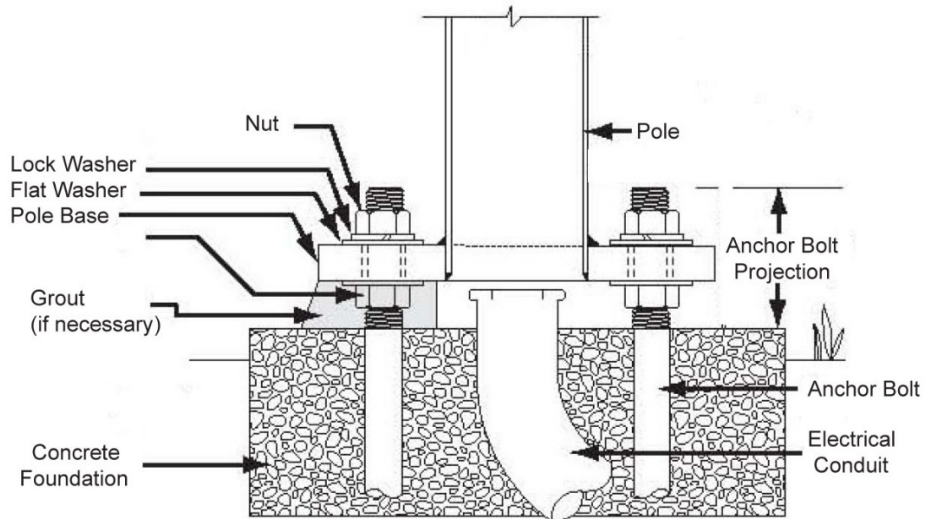


Figure 1 Standard foundational structure of a lighting pole installed

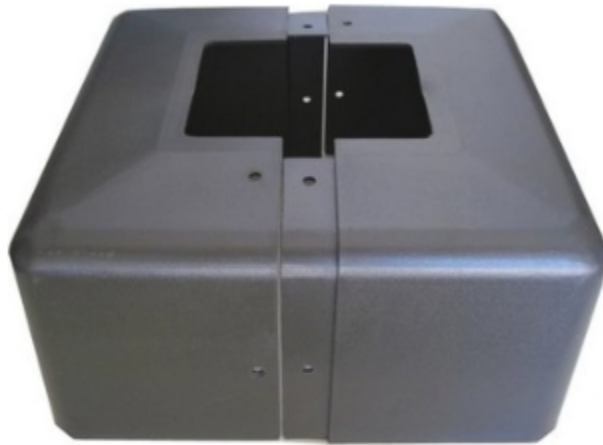


Figure 2 Standard base cover for lighting poles

Each pole should have a metal housing or base plate cover to keep safety from public injury if a child or adult falls on the metal bolts in the base if exposed. Above figures 1&2 show standard design of poles like existing at Rossmoor Parks.

The photo shows dirt accumulated on the pole base plate which allows water to saturate and then rust the hardware and metal base plate.



The pole fell when the metal base plate rusted through and the weight of the pole with the wind hitting the fixture at the top, created a force that snapped the metal plate causing the pole to fall.

Pole base should not be covered in dirt which allows water permeate the metal base and during heavy rain, causes water to pool around the steel plate. There bolts and nuts should be specified as stainless steel to anchor the plate to the concrete direct burial base underground, which will not rust like steel hardware.

Action: dig and clear dirt around pole foundations. Add bolt extensions of 3 inches to raise pole base if needed. Clean rust and coat all hardware with rust inhibitor. Install new poles. Suggest checking all poles at every park to clear each pole with dirt.

The pole in the photo shows concrete base portion above ground at a slope to allow water to run off the pole and into the landscape around the pole. See the dirt in the concrete form that should never be there, as moisture will collect and damage the plates. Suggest removing the caps, clearing the dirt and debris, seal the base with rust inhibitors periodically.

Also, check for proper drainage in adjacent landscape to prevent future pooling of water.



Rossmoor Park Rust Replacement Costs

Insurance covers the pole that fell with 2 Lighting fixture heads at the top of the 30-foot high pole at the volleyball venue. 1 pole remaining not included in this request. Remove all dirt and debris and add rust inhibitors on the hardware and baseplates.

The price to complete the pole and install new LED Lighting fixtures specified in the master plan for the parks is \$3,164.57

The 5 each remaining 30-foot high poles in jeopardy of potential failure due to rust identified by site staff are the remaining pole 2-head fixtures in the volleyball venue and the four poles single head fixture at the basketball court. New mounting arms for all poles bronze to match park design. Remove all dirt and debris and add rust inhibitors on the hardware and baseplates.

The price to complete the poles and install new LED Lighting fixtures specified in the master plan for the parks is \$13,173.11

Note: All new poles will be a stronger gauge with 5inch by 5inch square bronze to replace the old 4inch by 4inch.

Note: Public Safety Check - Integrity of all the poles in the park system should be checked to see if dirt accumulation is found, which will weaken the pole base foundation.

30foot poles are made locally in California and will take up to 2 weeks to manufacture. The installation will take 2 days to remove the existing 30foot poles, prep the foundation and install the new poles with LED lighting.

WEST COAST ELECTRIC
11632 Paseo Bonita
Los Alamitos, Ca. 90720
Office- (562) 493-7502
Mobile- (310) 612-9449
Fax- (562) 493-7503
Contractors License C-10 #389647



Proposal

To: James Ruth, R.C.S.D. General Manager
From: West Coast Electric
Date: 3/13/2017
Re: Rossmoor Park lighting repairs

Jim - Following is pricing to replace the (1) fallen pole and f(2) fixtures in Rossmoor Park (adjacent to the volleyball court) with LED lamp sources:

#1 "off road" capable lift

#2 repair / re-thread existing anchor bolts, provide new nuts and washers

#3 Provide and install a new 4" square steel pole x 25' high with handhole and tenon mount. Includes a double "bullhorn" mount for twin fixtures. Includes (2) LED 400-watt Metal Halide equivalent "shoebox" style fixtures with a natural color light source.

#4 Repair existing wiring at pole base and re-connect power source to the new fixtures

Project Total for Items #1 - 4 is estimated to be **\$4,450.00**

Price does not include Planning/Permit fees as we consider this to be a maintenance-related project.

We do not become involved with purported SCE rebate programs.

The new pole will be 25' high, not 30' per the original being replaced. A 30', 4" square steel pole is not considered to be a safe installation.

The new fixture heads are in a modern "shoe box" style. While they do not match the existing park fixtures exactly, they have a similar "look."

WEST COAST ELECTRIC
11632 Paseo Bonita
Los Alamitos, Ca. 90720
Office- (562) 493-7502
Mobile- (310) 612-9449
Fax- (562) 493-7503
Contractors License C-10 #389647



Proposal

To: James Ruth, R.C.S.D. General Manager
From: West Coast Electric
Date: 3/13/2017
Re: Rossmoor Park lighting pole lighting replacement

Jim - Following is pricing to upgrade the (5) poles and (6) fixtures in Rossmoor Park (adjacent to the basketball and volleyball courts) with LED lamp sources:

#1 Lift

#2 Repair / re-thread existing anchor bolts, provide new nuts and washers

#3 Provide and install a new 4" square steel pole x 25' high with handhole and tenon mount. Includes a double "bullhorn" mount for twin fixtures adjacent to the volleyball court. Includes (6) LED 400-watt Metal Halide equivalent "shoebox" style fixtures with a natural color light source [(2) adjacent to the volleyball court, (4) adjacent to the basketball court as they are single heads.]

#4 Repair existing wiring at pole base and re-connect power source to the new fixtures

Project Total for Items #1 - 4 is estimated to be **\$14,500.00**

Price does not include Planning/Permit fees as we consider this to be a maintenance-related project.

We do not become involved with purported SCE rebate programs.

The new poles will be 25' high, not 30' per the original being replaced. A 30', 4" square steel pole is not considered to be a safe installation.

The new fixture heads are in a modern "shoe box" style. While they do not match the existing park fixtures exactly, they have a similar "look."



